

Magnetventile/Solenoid valves

Scem/Parker



Abb. Pict.	Bestell-Nr. Order-No.	Beschreibung Description	Vergl.-Nr. Comp.-No.
1	370057	kpl., 3 Wege, 230VAC cpl., 3 ways, 230VAC	
2	370060	kpl., 3 Wege, 230VAC, mit Kabel cpl., 3 ways, 230VAC, with cable	60000110
3	370062	Ventilkörper Solenoid square pin	



Abb. Pict.	Bestell-Nr. Order-No.	Beschreibung Description	Vergl.-Nr. Comp.-No.
1	370202	kpl., 2 Wege, 230VAC cpl., 2 ways, 230VAC	60000105
2	371029	Magnetspule, 230VAC Magnetic coil, 230VAC	
3	371033	Magnetspule, 230VAC, mit Kabel Magnetic coil, 230VAC, with cable	

Lucifer



Abb. Pict.	Bestell-Nr. Order-No.	Beschreibung Description	Vergl.-Nr. Comp.-No.
1	370053	Magnetventil/kpl., 230VAC Solenoid valve/cpl., 230VAC	
2	370061	Ventilkörper Solenoid square pin	
3	371031	Magnetspule, 230VAC Magnetic coil, 230VAC	



Abb. Pict.	Bestell-Nr. Order-No.	Beschreibung Description	Vergl.-Nr. Comp.-No.
1	371090	Stecker/groß Plug/ big	
2	371095	O-Ring/viton O-Ring/viton	

Pressostate/Schalter/Pressure switches/switches

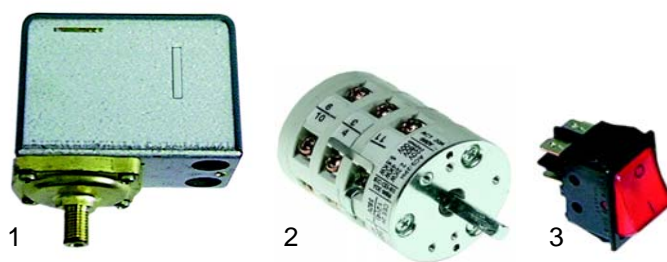


Abb. Pict.	Bestell-Nr. Order-No.	Beschreibung Description	Vergl.-Nr. Comp.-No.
1	541021	Pressostat Pressure switch	60000000
2	345147	Hauptschalter Main switch	60900000
3	301001	Gruppenschalter Group switch	60900035

Niveauregl./Level controllers

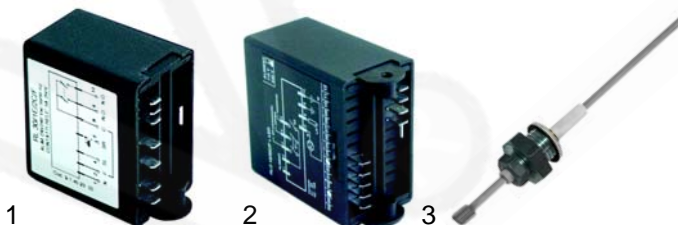


Abb. Pict.	Bestell-Nr. Order-No.	Beschreibung Description	Vergl.-Nr. Comp.-No.
1	400019	Regler/RL 30/1E-2C/F, 230V Controller/RL 30/1E-2C/F, 230V	60100100
2	400656	Regler/RLO 1E/Sic/F+LED, 230V Controller/RLO 1E/Sic/F+LED, 230V	60100040
3	400020	Niveausonde, 150mm Level probe, 150mm	60100200

Elektronik, Flowmeter/Electronics, flowmeter



Abb. Pict.	Bestell-Nr. Order-No.	Beschreibung Description	Vergl.-Nr. Comp.-No.
1	400004	Flowmeter (Gicar), 1/4" Flowmeter (Gicar), 1/4"	60100050
2	400256	Stecker Plugs	
3	400257	Zählrad Flow-meter reel	
4	400258	Gehäusedichtung Case gasket	

Passend für/Suitable for Expobar

Tastaturen/Key push buttons

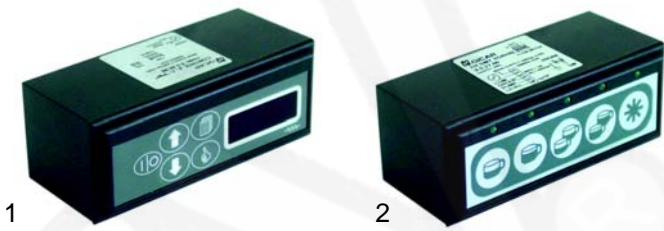


Abb. Pict.	Bestell-Nr. Order-No.	Beschreibung Description	Vergl.-Nr. Comp.-No.
1	400654	Tastatur, Gicar 9.5.20.96 Key push button, Gicar 9.5.20.96	60100000
2	400653	Tastatur, Gicar 9.5.27.60 Key push button, Gicar 9.5.27.60	60100012



Abb. Pict.	Bestell-Nr. Order-No.	Beschreibung Description	Vergl.-Nr. Comp.-No.
1	400652	Tastatur, Gicar 9.5.28.28 Key push button, Gicar 9.5.28.28	
2	400655	Tastatur, Gicar 9.5.28.30 Key push button, Gicar 9.5.28.30	60100020

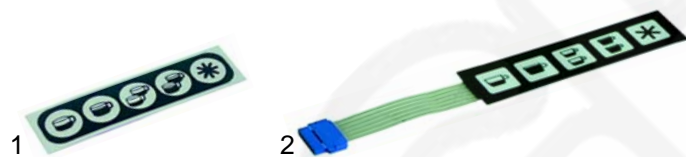


Abb. Pict.	Bestell-Nr. Order-No.	Beschreibung Description	Vergl.-Nr. Comp.-No.
1	400657	Tastaturfolie Panel for push buttons	60102002
2	400334	Folientastatur Push button panel	60102000

Heizkörper/Heaters



Abb. Pict.	Bestell-Nr. Order-No.	Beschreibung Description	Vergl.-Nr. Comp.-No.
1	417030	Heizkörper, 1 Gruppe, 1800W, 230V Heater, 1 group, 1800W, 230V	
2	417031	Heizkörper, 2 Gruppen, 3000W, 230V Heater, 2 Gruppen, 3000W, 230V	
2	417095	Heizkörper, 2 Gruppen, 3500W, 230V Heater, 2 Gruppen, 3500W, 230V	
3	417096	Heizkörper, 3 Gruppen, 4000W, 230V Heater, 3 Gruppen, 4000W, 230V	
4	528006	Dichtung Gasket	

Manometer/Manometers

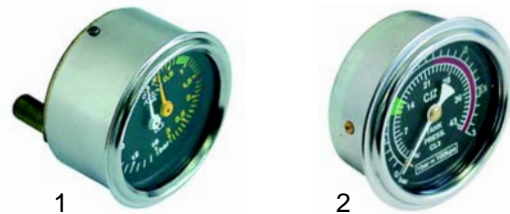


Abb. Pict.	Bestell-Nr. Order-No.	Beschreibung Description	Vergl.-Nr. Comp.-No.
1	541208	Manometer/Doppelskala Manometer/double scale	60000050
2	541280	Manometer, 0 - 3bar Manometer, 0 - 3bar	60000065

Ventile/Valves



Abb. Pict.	Best.-Nr. Ord.-No.	Beschreibung Description	Vergl.-Nr. Comp.-No.
1	529312	Sicherheitsventil, 1,8bar, 3/8" Safety valve, 1,8bar, 3/8"	65000110
2	529316	Sicherheitsventil/plombiert, 1,8bar, 3/8" Safety valve/sealt, 1,8bar, 3/8"	
3	529303	Entlüftungsventil, 1/4" Empty valve, 1/4"	
4	529304	Entlüftungsventil, 1/4" Empty valve, 1/4"	65000200
5	529349	Cu-Dichtung, 3/8" Cu-gasket, 3/8"	
6	529361	Cu-Dichtung, 1/4" Cu-gasket, 1/4"	

Wasserstandsglas/Level glass

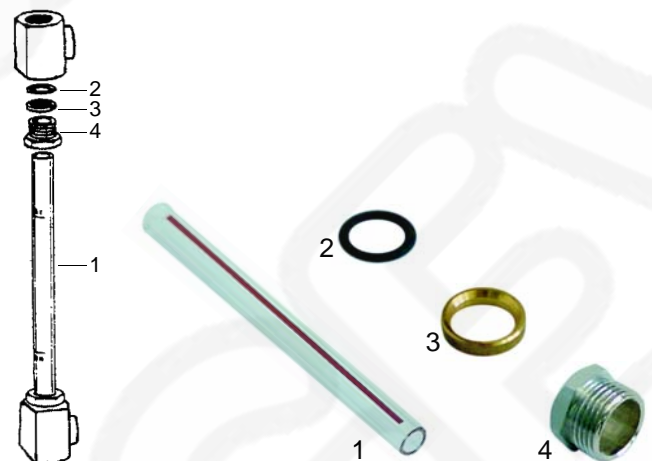


Abb. Pict.	Bestell-Nr. Order-No.	Beschreibung Description	Vergl.-Nr. Comp.-No.
1	529386	Wasserstandsglas Level glass	35902000
2	528402	O-Ring (Viton) O-Ring (Viton)	50000115
3	528682	Druckscheibe Pressure washer	30100050
4	529397	Überwurfschraube Pipe upper nut	30100040

Wasserfüllventil/Water intake valve

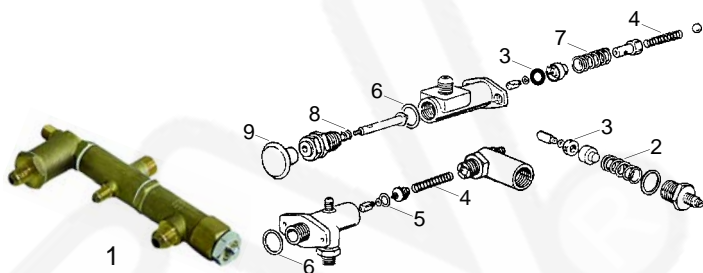


Abb. Pict.	Bestell-Nr. Order-No.	Beschreibung Description
1	529561	Wasserfüllventil Water intake valve

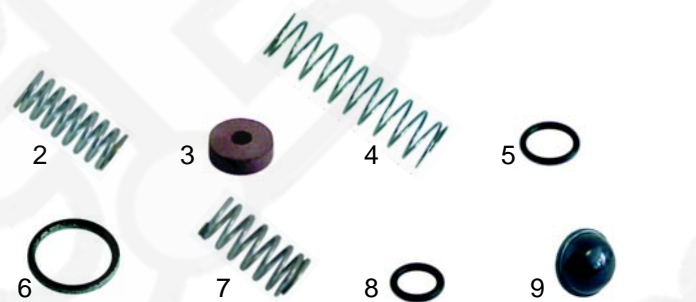


Abb. Pict.	Bestell-Nr. Order-No.	Beschreibung Description	Vergl.-Nr. Comp.-No.
2	528475	Feder Spring	CTAV7-24
3	528476	Dichtung Gasket	50000020
4	528392	Feder Spring	CTAV7-21
5	528478	O-Ring O-ring	50000130
6	528479	Dichtung Gasket	50010040
7	528480	Feder Spring	OB55000020
8	528396	O-Ring O-ring	-
9	111093	Knopf Button	40000040

Ablaufwanne/Drain tap



Pos. Item	Bestell-Nr. Order-No.	Beschreibung Description
1	528609	Ablaufwanne Drain tap

Hähne/Taps

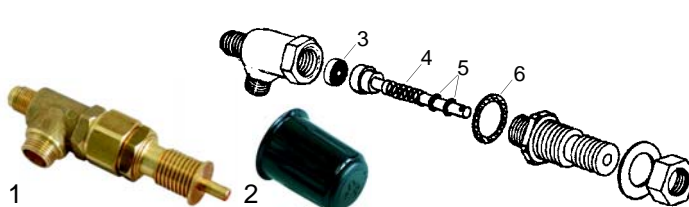
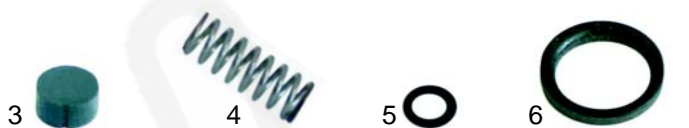


Abb. Pict.	Bestell-Nr. Order-No.	Beschreibung Description
1	528482	Dampf/Wasserhahn, kpl. Steam/Watertap, cpl.
2	529534	Knebel/kpl. Knob/cpl.



3	528398	Dichtung Gasket
4	528484	Feder Spring
5	528485	O-Ring O-ring
6	528401	Dichtung Gasket

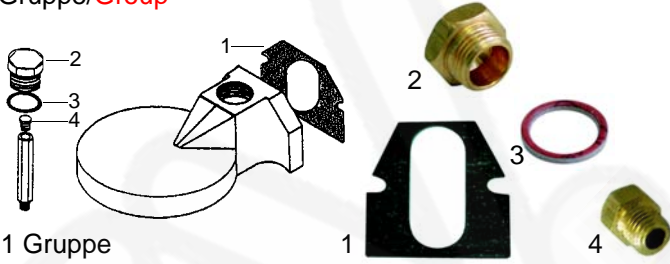
Rohre/Pipes



Abb. Pict.	Bestell-Nr. Order-No.	Beschreibung Description
1	529820	Dampfrohr Steampipe
1	529821	Dampfrohr (CNS) Steampipe (stainless steel)
2	529822	Wasserrohr Steampipe
3	528210	Dichtung (Klingerit) Gasket (klingerit)
4	529719	Feder Spring
5	529718	Federführung Spring guide
6	529412	O-Ring O-ring

1 Passend für/Suitable for Expobar

Gruppe/Group



1 Gruppe

Abb. Pict.	Bestell-Nr. Order-No.	Beschreibung Description	Vergl.-Nr. Comp.-No.
1	529538	Gruppendichtung Group gasket	50000010
2	528951	Schraubkappe Screw cap	
3	528325	Dichtung Gasket	50010040
4	528486	Düse Nozzle	30200020

Dusche, Blindfilter/Shower, blindfilter



Abb. Pict.	Bestell-Nr. Order-No.	Beschreibung Description	Vergl.-Nr. Comp.-No.
1	529081	Wasserverteiler Water dispersion	
2	529080	Dusche Shower	75000010
3	529023	Blindfilter Blindfilter	

Siebträgerdichtungen/Filter holder gaskets



Abb. Pict.	Bestell-Nr. Order-No.	Beschreibung Description
1	528033	Distanzeinlage, 71 x 68mm Shim gasket, 71 x 68mm
2	528030	Siebträgerdichtung, 73 x 57 x 8mm Filter holder gasket, 73 x 57 x 8mm
2	528031	Siebträgerdichtung, 73 x 57 x 8,5mm Filter holder gasket, 73 x 57 x 8,5mm
2	528032	Siebträgerdichtung, 73 x 57 x 9mm Filter holder gasket, 73 x 57 x 9mm
2	528070	Siebträgerdichtung, 73 x 57 x 8mm, 3 Kerben Filter holder gasket, 73 x 57 x 8mm, 3 notches

Siebe/Filters



Abb. Pict.	Bestell-Nr. Order-No.	Beschreibung Description	Vergl.-Nr. Comp.-No.
1	529012	Sieb/1 Tasse (6g) Filter/1 cup (6g)	75000037
1	529011	Sieb/1 Tasse (7g) Filter/1 cup (7g)	75000030
2	529014	Sieb/2 Tassen (12g) Filter/2 cups (12g)	75000047
2	529013	Sieb/2 Tassen (14g) Filter/2 cups (14g)	75000040
3	529079	Siebträgerfeder Filter holder spring	75000120

Siebträger/Filter holder



Abb. Pict.	Bestell-Nr. Order-No.	Beschreibung Description	Vergl.-Nr. Comp.-No.
1	529058	Siebträger M12, 3/8" Filter holder M12, 3/8"	75000110
2	529044	Siebträgergriff M12 Filter holder handle M12	75000105

Ausläufe/Spouts



Abb. Pict.	Bestell-Nr. Order-No.	Beschreibung Description	Vergl.-Nr. Comp.-No.
1	529001	Auslauf 3/8", 1 Weg lang Spout 3/8", one way long	
2	529003	Auslauf 3/8", 1 Weg gebogen Spout 3/8", one way curved	75000050
3	529007	Auslauf 3/8", 2 Wege kurz Spout 3/8", two way short	75000006