

Passend für/Suitable for Astoria

Magnetventile/Solenoid valves

Scem/Parker



Abb. Pict.	Best.-Nr. Ord.-No.	Beschreibung Description	Vergl.-Nr. Comp.-No.
1	370057	kpl., 3 Wege, 230VAC cpl., 3 ways, 230VAC	18157
2	370062	Ventilkörper Solenoid square pin	
3	370206	kpl., 1/8", 2 Wege, 230VAC cpl., 1/8", 2 ways, 230VAC	18162 18161
4	371029	Magnetspule, 230VAC Magnetic coil, 230VAC	

Lucifer



Abb. Pict.	Best.-Nr. Ord.-No.	Beschreibung Description	Vergl.-Nr. Comp.-No.
1	370053	kpl., 3 Wege, 230VAC cpl., 3 ways, 230VAC	18153 18151
2	370061	Ventilkörper Solenoid square pin	
3	370072	kpl., 1/8", 2 Wege, 230VAC cpl., 1/8", 2 ways, 230VAC	18164
4	371031	Magnetspule, 230VAC Magnetic coil, 230VAC	

ODE

Sirai

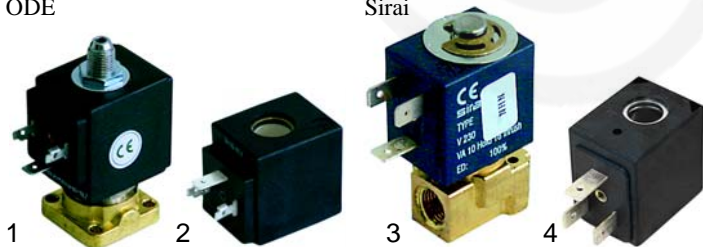


Abb. Pict.	Best.-Nr. Ord.-No.	Beschreibung Description	Vergl.-Nr. Comp.-No.
1	370203	kpl., 3 Wege, 230VAC cpl., 3 ways, 230VAC	
2	371150	Magnetspule, 230VAC Magnetic coil, 230VAC	
3	370168	kpl., 1/8", 2 Wege, 230VAC cpl., 1/8", 2 ways, 230VAC	18171 18172
4	371071	Magnetspule, 230VAC Magnetic coil, 230VAC	

Magnetventile Zubehör/Solenoid valve accessories



Abb. Pict.	Bestell-Nr. Order-No.	Beschreibung Description	Vergl.-Nr. Comp.-No.
1	371091	Stecker/klein Plug/small	
2	371090	Stecker/groß Plug/big	18110
3	371095	O-Ring/Viton O-Ring/viton	12305
4	371100	O-Ring/Silikon O-Ring/Silicon	

Pressostate/Schalter/Pressure switches/switches



Abb. Pict.	Bestell-Nr. Order-No.	Beschreibung Description	Vergl.-Nr. Comp.-No.
1	541021	Pressostat Pressure switch	
2	520139	Membranen-Satz Membrane-set	
3	541089	Pressostat, 1/8" Pressure switch, 1/8"	20155

Hauptschalter/Main switches



Abb. Pict.	Bestell-Nr. Order-No.	Beschreibung Description	Vergl.-Nr. Comp.-No.
1	346104	Schalter, 0 - I, 3-pol, 20A Switch, 0 - I, 3-pol, 20A	18201 18211
2	346105	Schalter, 0 - I, 3-pol, 32A Switch, 0 - I, 3-pol, 32A	18207
3	346100	Umschalter, I - 0 - 2, 20A Changer-switch, I - 0 - 2, 20A	18104

Hauptschalter/Main switches

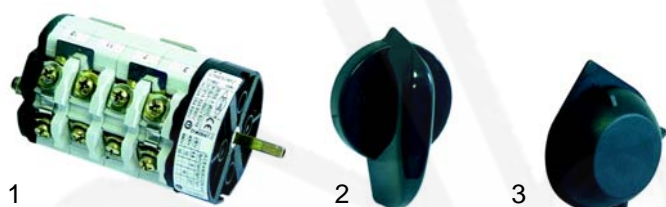


Abb. Pict.	Best.-Nr. Ord.-No.	Beschreibung Description	Gerätetyp Device type	Vergl.-Nr. Comp.-No.
1	346101	Umschalter, 32A Changer-switch, 32A		18105
2	110205	Knebel Knob		15271
3	111155	Knebel Knob	Brava	15277999

Relais/Relays

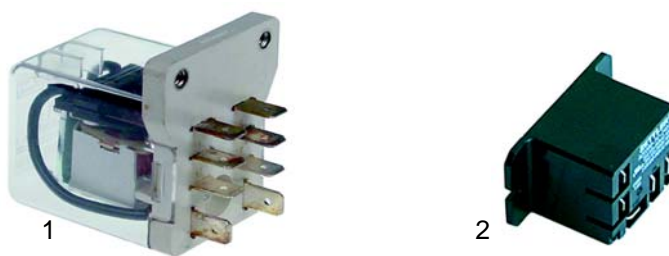


Abb. Pict.	Best.-Nr. Ord.-No.	Beschreibung Description	Gerätetyp Device type	Vergl.-Nr. Comp.-No.
1	380315	2 Schließer, 16A 2 closer, 16A	Compact	18452
2	380307	1 Wechsler, 16A 1 changer, 16A		18460001

Schalter/Switches (30 x 22mm)

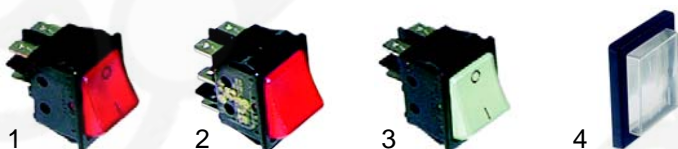


Abb. Pict.	B.-Nr. O.-No.	Beschreibung Description	Gerätetyp Device type	Ver.-Nr. Com.-No.
1	301020	Taster (beleuchtet/rot) Push button (lighted/red)	Compact	18266
1	301001	Schalter (beleuchtet/rot) Switch (lighted/red)	Compact Argenta Brava Divina	18260
2	301015	Umschalter (beleuchtet/rot) Changer-switch (lighted/red)	Compact	18135
3	301009	Schalter (beleuchtet/klar) Switch (lighted/clear)	Argenta Brava	18262
4	301036	Schutzhaube Protecting cover	Compact	19049

Thermostate/Thermostats

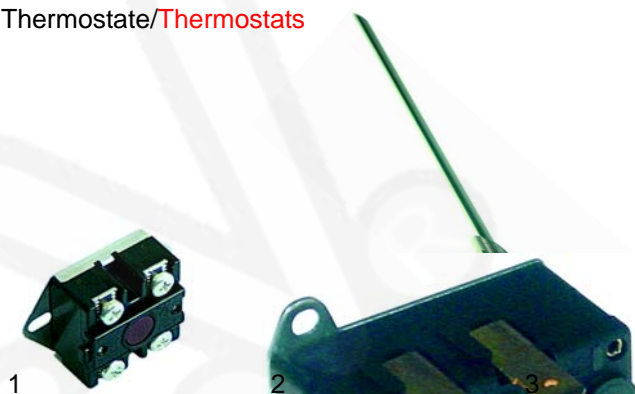


Abb. Pict.	Best.-Nr. Ord.-No.	Beschreibung Description	Vergl.-Nr. Comp.-No.
1	390431	Sicherheitsthermostat, 2-pol, 40A, 250V Safety thermostat, 2-pol, 40A, 250V	20300006
2	390434	Sicherheitsthermostat, 2-pol, 20A, 400V Safety thermostat, 2-pol, 20A, 400V	20301
3	390433	Sicherheitsthermostat, 2-pol, 20A, 400V Safety thermostat, 2-pol, 20A, 400V	20302



Abb. Pict.	B.-Nr. O.-No.	Beschreibung Description	Einbau Fitting	Gerätetyp Device type	V.-Nr. C.-No.
1	345037	Gruppenschalter Group switch	Ø25mm	Brava	18245
2	301025	Gruppenschalter Group switch	28x24mm		
3	359413	Signallampe Signal lamp			21030
4	359139	Signallampe, 230V Signal lamp	10mm		21011
4	359019	Signallampe, 400V Signal lamp, 400V	10mm		21012



Abb. Pict.	Best.-Nr. Ord.-No.	Beschreibung Description	V.-Nr. C.-No.
1	390436	Anlegethermostat, 100°, 16A, 250V Stoke thermostat, 100°, 16A, 250V	20300009
2	390435	Anlegethermostat, 180°, 16A, 250V Stoke thermostat, 180°, 16A, 250V	20300011
3	390370	Sicherheitsthermostat, 145°, M4-16A, 250V Safety thermostat, 145°, M4-16A, 250V	20304

Niveauregler/Level controllers



Abb. Pict.	Best.-Nr. Ord.-No.	Beschreibung Description	Gerätetyp Device type	V.-Nr. C.-No.
1	400530	RMFC2SN, 230V	Compact	18045
2	400019	RL 30/1E-2C/F, 230V	Argenta	18080
3	400537	RL 30/1E-2C/F Time Out, 230V	Brava, Divina	18080001
4	400538	Led Time Out	Divina	22625

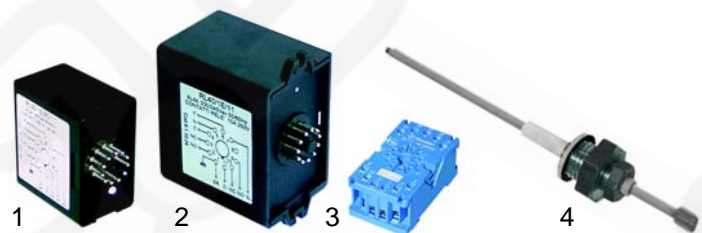


Abb. Pict.	Bestell.-Nr. Order-No.	Beschreibung Description	Gerätetyp Device type	Ver.-Nr. Com.-No.
1	400017	RL 30/1E-2C/11, 230V		
2	400230	RL 40/1E/11, 230V		18402
3	380136	Socket, 11-pole Base, 11 poles	Argenta, Brava,	18600
4	400020	Niveausonde, 160mm Level probe, 160mm	Compact, Divina	20251
4	400551	Niveausonde, 255mm Level probe, 255mm		20252

Elektronik, Tastaturen/ Electronics, Keyboards

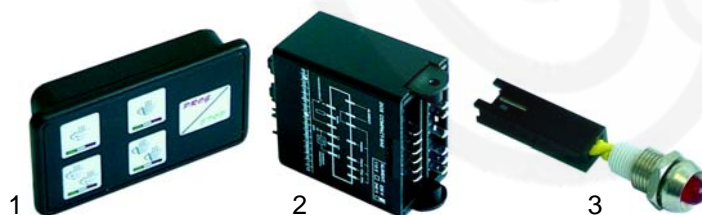


Abb. Pict.	Bestell.-Nr. Order-No.	Beschreibung Description	Gerätetyp Device type	Ver.-Nr. Com.-No.
1	400532	5 Tasten 5 push buttons	Compact	18371008
2	400531	Zentraleinheit, 1Gr Electronic box, 1gr	Compact	18045001
3	400538	Led	Compact	22623

Elektronik, Tastaturen/ Electronics, key push buttons



Abb. Pict.	Bestell.-Nr. Order-No.	Beschreibung Description	Gerätetyp Device type	Ver.-Nr. Com.-No.
1	400540	5 Tasten 5 push buttons	Brava	18359
2	400541	6 Tasten 6 push buttons	Brava	18359001
3	400539	Zentraleinheit, 1 - 3Gr Electronic box, 1 - 3gr	Brava	18090016

Elektronik, Tastaturen/ Electronics, key push button

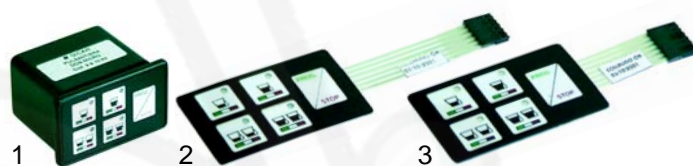


Abb. Pict.	Best.-Nr. Ord.-No.	Beschreibung Description	Gerätetyp Device type	Ver.-Nr. Com.-No.
1	400353	5 Tasten, 9.910.63 5 push buttons, 9.910.63	Argenta	18354
2	400536	5 Tasten, Gicar 5 push buttons	Argenta	20100
3	400535	5 Tasten, Giemme 5 push buttons	Argenta	20099001



Abb. Pict.	Bestell.-Nr. Order-No.	Beschreibung Description	Gerätetyp Device type	Ver.-Nr. Com.-No.
1	400379	Elektronik-Box, 1-3G Electronic box, 1-3gr	Argenta	18079 18076

Elektronik, Tastaturen/ Electronics, key push button



Abb. Pict.	Best.-Nr. Ord.-No.	Beschreibung Description	Gerätetyp Device type	Ver.-Nr. Com.-No.
1	400542	5 Tasten TH, 9.5.17.62 5 push buttons, 9.5.17.62	Junior (Elektronik)	18371010
2	400547	1 Schalter (Kaffee) 1 switch (coffee)	Junior (Manuell)	18371017

Elektronik, Tastaturen/Electronic, key push buttons Divina



Abb. Pict.	B.-Nr. O.-No.	Beschreibung Description	Gerätetyp Device type	V.-Nr. C.-No.
1	400543	4 Tasten TH, 9.2.2056 4 push buttons, 9.2.2056	Zeitsteuerung Timing regulation	21276
2	400545	2 Schalter (Kaffee) 2 switches (coffee)		18371018



Abb. Pict.	Bestell-Nr. Order-No.	Beschreibung Description	Gerätetyp Device type	Ver.-Nr. Com.-No.
1	400546	1 Schalter (Kaffee) 1 switch (coffee) 1 Taster (Wasser) 1 push button (water)	AEP	18371021
2	400547	1 Schalter (Kaffee) 1 switch (coffee)	AEP	18371017



Abb. Pict.	Bestell-Nr. Order-No.	Beschreibung Description	Gerätetyp Device type	Ver.-Nr. Com.-No.
1	400550	5 Tasten 5 push buttons	SAE	18371016
2	400549	2 Schalter (Kaffee) 1 Taster (Wasser) 2 switches (coffee) 1 push button (water)	SAE	18371020
3	400548	1 Schalter (Kaffee) 1 Taster (Wasser) 1 switches (coffee) 1 push button (water)	SAE	18371019



Pos. Item	Bestell-Nr. Order-No.	Beschreibung Description	Gerätetyp Device type	Ver.-Nr. Com.-No.
1	400544	Zentraleinheit, 1-3Gr Electronic box, 1-3gr	SAE	18090008

Elektronik, Tastaturen/Electronic, key push buttons Divina



Abb. Pict.	B.-Nr. O.-No.	Beschreibung Description	Gerätetyp Device type	V.-Nr. C.-No.
1	400350	4 Tasten, Zeitsteuerung, 9.2.20.51 4 push buttons, timing regulation, 9.2.20.51		21274
2	400352	5 Tasten, DOS TH, 1Gr 5 push buttons, DOS TH, 1gr		18365

Elektronik, Flowmeter/Electronics, Flowmeter



Abb. Pict.	Bestell-Nr. Order-No.	Beschreibung Description	Gerätetyp Device type	Vergl.-Nr. Comp.-No.
1	400004	Flowmeter, 1/4" Flowmeter, 1/4"		18126
2	400256	Stecker Plugs	Argenta, Brava,	
3	400257	Zählrad Flowmeter reel	Compact, Divina	13505
4	400258	Gehäusedichtung Case gasket		12315

Pumpen/Pumps



Abb. Pict.	Bestell-Nr. Order-No.	Beschreibung Description	Gerätetyp Device type	Vergl.-Nr. Comp.-No.
1	500227	ULKA NME Typ 4	Prima	26318
2	500173	ULKA EP5	Prima	26316
3	500123	Fluid-O-Tech	Compact Argenta Junior	26304

Motoren/Engines

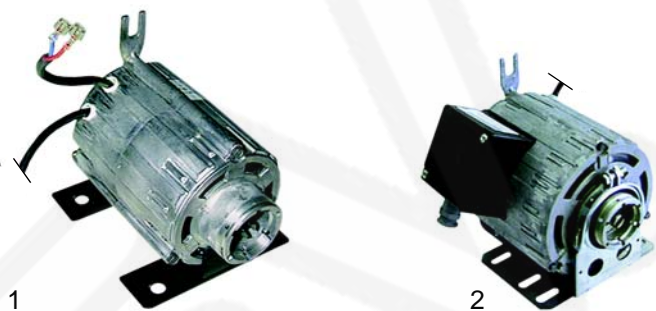


Abb. Pict.	Bestell-Nr. Order-No.	Beschreibung Description	Gerätetyp Device type	Vergl.-Nr. Comp.-No.
1	500072	RPM, 100W	Compact	18304
2	500061	RPM, 165W	Argenta, Brava, Divina	18300, 18301, 18312



Abb. Pict.	Bestell-Nr. Order-No.	Beschreibung Description	Gerätetyp Device type	Vergl.-Nr. Comp.-No.
1	500225	RPM	Argenta,	56406
2	500226	Zecchin	Brava, Divina	56402

Pumpen/Pumps



Abb. Pict.	B.-Nr. O.-No.	Beschreibung Description	Gerätetyp Device type	V.-Nr. C.-No.
1	500064	Fluid-O-Tech, 200l/h	Argenta,	26303
2	500230	Procon, 200l/h	Brava, Divina	26302

Heizkörper/Heaters



Abb. Pict.	Best.-Nr. Ord.-No.	Beschreibung Description	Gerätetyp Device type	Ver.-Nr. Com.-No.
1	417162	800W, 230V	Prima	17301
2	417089	1300W, 230V, 1 1/4"	Compact	17201
3	528021	Dichtung, 1 1/4" Gasket, 1 1/4"	Compact	12001

2-kreisig (4-polig)/2 circuits (4 poles)



Abb. Pict.	Best.-Nr. Ord.-No.	Beschreibung Description	Gerätetyp Device type	Ver.-Nr. Com.-No.
1	417039	2000W, 230-240V, 1Gr	Argenta, Brava, Divina	17002
2	417040	2600W, 230-240V, 2Gr		17051
3	417064	3700W, 230-240V, 3Gr		17101

3-kreisig (6-polig)/3 circuits (6 poles)



Abb. Pict.	Best.-Nr. Ord.-No.	Beschreibung Description	Gerätetyp Device type	V.-Nr. C.-No.
1	417043	1800W, 230V/400V, 1Gr	Junior	17006
2	417087	2600W, 230V/400V, 2Gr	Argenta, Brava, Divina	17054
3	417088	3700W, 230V/400V, 3Gr		17104

Heizkörper/Heaters

3-kreisig (6-polig)/3 circuits (6 poles)



Abb. Pict.	Best.-Nr. Ord.-No.	Beschreibung Description	Gerätetyp Device type	Ver.-Nr. Com.-No.
1	528001	Dichtung Gasket	Universal	12001
2	528002	Dichtung Gasket	Universal	12001

Kesseldichtungen/Pot gaskets



Abb. Pict.	Best.-Nr. Ord.-No.	Beschreibung Description	Gerätetyp Device type	Ver.-Nr. Com.-No.
1	528150	190 x 140 x 3mm	Universal	12003
2	528151	190 x 140 x 2mm	Universal	12003

Manometer/Manometers



Abb. Pict.	Best.-Nr. Ord.-No.	Beschreibung Description	Gerätetyp Device type	Ver.-Nr. Com.-No.
1	541261	1/8", 2,5bar, 40mm	Compact	21105
2	541225	1/4", 3bar, 52mm	Hebel	21101
3	541223	1/8", 2,5/16bar, 60mm, Doppelskala, 1/8", 2,5/16bar, 60mm, double scale	Argenta	21100 21104



Abb. Pict.	Best.-Nr. Ord.-No.	Beschreibung Description	Gerätetyp Device type	Ver.-Nr. Com.-No.
1	541262	1/8", 3,0/15bar, 60m	Brava	21112
2	541263	1/8", 2,5/16bar, 60m	Divina	21109

Ventile/Valves



Abb. Pict.	Best.-Nr. Ord.-No.	Beschreibung Description	Gerätetyp Device type	V.-Nr. C.-No.
1	529331	Sicherheitsventil, 1/8" Safety valve, 1/8"		20357
2	529312	Sicherheitsventil, 3/8" Safety valve, 3/8"		20350
3	529316	Sicherheitsventil, 3/8" Safety valve, 3/8"	Ispel	20356
4	529332	Sicherheitsventil, 1,8bar, 3/8" Safety valve, 1,8bar, 3/8"	TÜV, CE	20352 20351



Abb. Pict.	Best.-Nr. Ord.-No.	Beschreibung Description	Gerätetyp Device type	V.-Nr. C.-No.
1	529303	Entlüftungsventil, 1/4" Empty valve, 1/4"		
2	529304	Entlüftungsventil, 1/4" Empty valve, 1/4"		56150
3	529361	Cu-Dichtung, 1/4" Cu-gasket, 1/4"		12153
4	529349	Cu-Dichtung, 3/8" Cu-gasket, 3/8"		12101

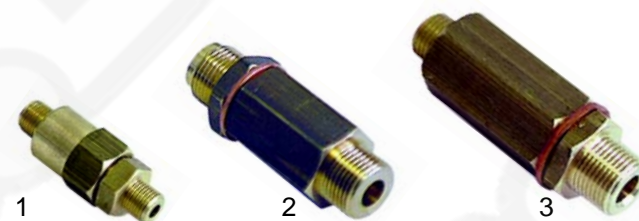


Abb. Pict.	Best.-Nr. Ord.-No.	Beschreibung Description	Gerätetyp Device type	V.-Nr. C.-No.
1	529335	Rückschlagventil, 1/8" Non-return valve, 1/8"	Compact	20358
2	529301	Rückschlagventil, 3/8" Non-return valve, 3/8"	Argenta	56151
3	529337	Expansionsventil, 3/8" - 1/4" Expansion valve, 3/8" - 1/4"	Argenta	56152

Ventile/Valves



Abb. Pict.	B.-Nr. O.-No.	Beschreibung Description	Gerätetyp Device type	V.-Nr. C.-No.
1	529336	Expansionsventil, 3/8" - 1/2" Expansion valve, 3/8" - 1/2"	Compact	56210
2	529333	SCNR-Ventil SCNR-valve	Argenta, Brava, Divina	20361
3	529334	Expansionsventil, 10bar Expansion valve, 10bar	Junior	56300

Wasserfüllventil/Water intake valve

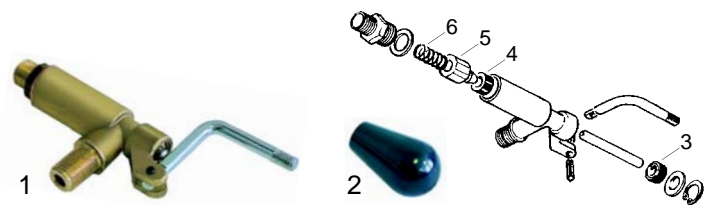


Abb. Pict.	B.-Nr. O.-No.	Beschreibung Description	Gerätetyp Device type	V.-Nr. C.-No.
1	529632	Wasserfüllventil komplett Water intake valve assembly	Compact	56210
2	111092	Griff M8 Knob M8	Argenta, Brava, Divina	20361

Wasserstandsglas/Water level glass

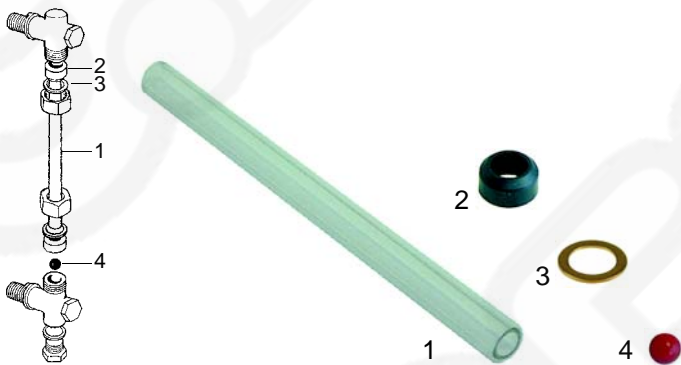


Abb. Pict.	B.-Nr. O.-No.	Beschreibung Description	Gerätetyp Device type	V.-Nr. C.-No.
1	529407	Wasserstandsglas, 170 x 11mm Level glass, 170 x 11mm		21300
2	529408	Wasserstandsglasdichtung Level glass gasket		12200
3	529862	Druckscheibe Pressure washer		25652
4	529355	Plastikkugel Plastic ball		15300



3	528309	Dichtung Gasket		12205
4	528308	Kolbendichtung Piston gasket		12203
5	528310	Kolben Piston		25615
6	528311	Feder Spring		10451



Abb. Pict.	Bestell-Nr. Order-No.	Beschreibung Description	Gerätetyp Device type	Vergl.-Nr. Comp.-No.
1	529770	Dampfhahn/kpl. Steam tap/cpl.	Compact	56110
2	111151	Knebel Knob	Compact	15251

Hähne/Taps



Abb. Pict.	Bestell-Nr. Order-No.	Beschreibung Description	Gerätetyp Device type	Vergl.-Nr. Comp.-No.
1	529621	Hahn/kpl. Tap/cpl.		
2	529670	Körper Body		53003
3	529658	Vorderteil/kpl. Front part/cpl.		56100

Knebel/Knobs



Abb. Pict.	Bestell-Nr. Order-No.	Beschreibung Description	Gerätetyp Device type	Vergl.-Nr. Comp.-No.
1	111153	Wasser Water	Brava	15277998
2	111154	Dampf Steam	Brava	15277997
3	111157	Wasser Water	Divina	15276
4	111158	Dampf Steam	Divina	15275

Rohre/Pipes



Abb. Pict.	Bestell-Nr. Order-No.	Beschreibung Description	Gerätetyp Device type	Vergl.-Nr. Comp.-No.
1	529775	Dampf, VC, 285m Steam, VC, 285m	Argenta	90312
1	529622	Dampf, VC, 320m Steam, VC, 320m	Argenta	90313
2	529773	Dampf, CNS, 285m Steam, CNS 285m	Argenta	90310
2	529772	Dampf, CNS 320m Steam, CNS 320m	Argenta	90309
3	529776	Wasser Water	Argenta	90321

Knebel/Knobs



Abb. Pict.	Bestell-Nr. Order-No.	Beschreibung Description	Gerätetyp Device type	Vergl.-Nr. Comp.-No.
1	111156	Wasser Water	Alte Serien Old series	15253
2	111090	Dampf Steam	Alte Serien Old series	15254
3	111152	Wasser Water	Argenta	15264
4	111091	Dampf Steam	Argenta	15265



Abb. Pict.	Bestell-Nr. Order-No.	Beschreibung Description	Gerätetyp Device type	Vergl.-Nr. Comp.-No.
1	529771	Wasser Water	Compact	56119024
2	529777	Dampf, CNS Steam, stainless steel	Brava	56108
3	529774	Dampf, VC Steam, VC	Alt	90311

Rohrzubehör/Accessories for pipes

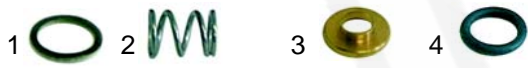


Abb. Pict.	Bestell-Nr. Order-No.	Beschreibung Description	Gerätetyp Device type	Vergl.-Nr. Comp.-No.
1	528210	Dichtung Gasket		
1	528314	Dichtung (Teflon) Gasket (teflon)		12010
2	529719	Feder Spring	Alt Compact Argenta	10452
3	529718	Druckscheibe Pressure washer	Brava	25657
4	529412	O-Ring O-ring		12300



Abb. Pict.	Bestell-Nr. Order-No.	Beschreibung Description	Gerätetyp Device type	Vergl.-Nr. Comp.-No.
1	529778	Dampf (CNS) Steam (CNS)	Divina	83250002
2	528314	Dichtung (Teflon) Gasket (teflon)	Divina	12010
3	529735	Feder Spring	Divina	10465
4	529738	Buchse (Teflon) Bush (teflon)	Divina	15191
5	529739	O-Ring O-ring	Divina	
6	529779	Buchse/kpl. Bush/cpl.	Divina	

Ablaufwanne/Drain tap



Abb. Pict.	B.-Nr. O.-No.	Beschreibung Description	Gerätetyp Device type	V.-Nr. C.-No.
1	528600	Ablaufwanne 3/8" Drain tap 3/8"		15502
2	520072	Ablaufschlauch 3/8", VPE 5m Outlet pipe 3/8", packaging 5m		15470
2	520036	Ablaufschlauch, 3/8", VPE 30m Outlet pipe, 3/8", packaging 30m		15470

Gruppe/Group



Abb. Pict.	Best.-Nr. Ord.-No.	Beschreibung Description	Gerätetyp Device type	Vergl.-Nr. Comp.-No.
1	525000	Gruppe/kpl. Group/cpl.	Compact	56055
2	525002	Gruppe/kpl. Group/cpl.	Argenta Wärmetauscher/herausnehmbar	56072
3	525001	Gruppe/kpl. Group/cpl.	Argenta Wärmetauscher/fest	56054

Abb. Pict.	Bestell-Nr. Order-No.	Beschreibung Description	Gerätetyp Device type	Vergl.-Nr. Comp.-No.
4	525004	Gruppe/kpl. Group/cpl.	Brava	56082001
5	525003	Gruppe/kpl. Group/cpl.	Divina	56080

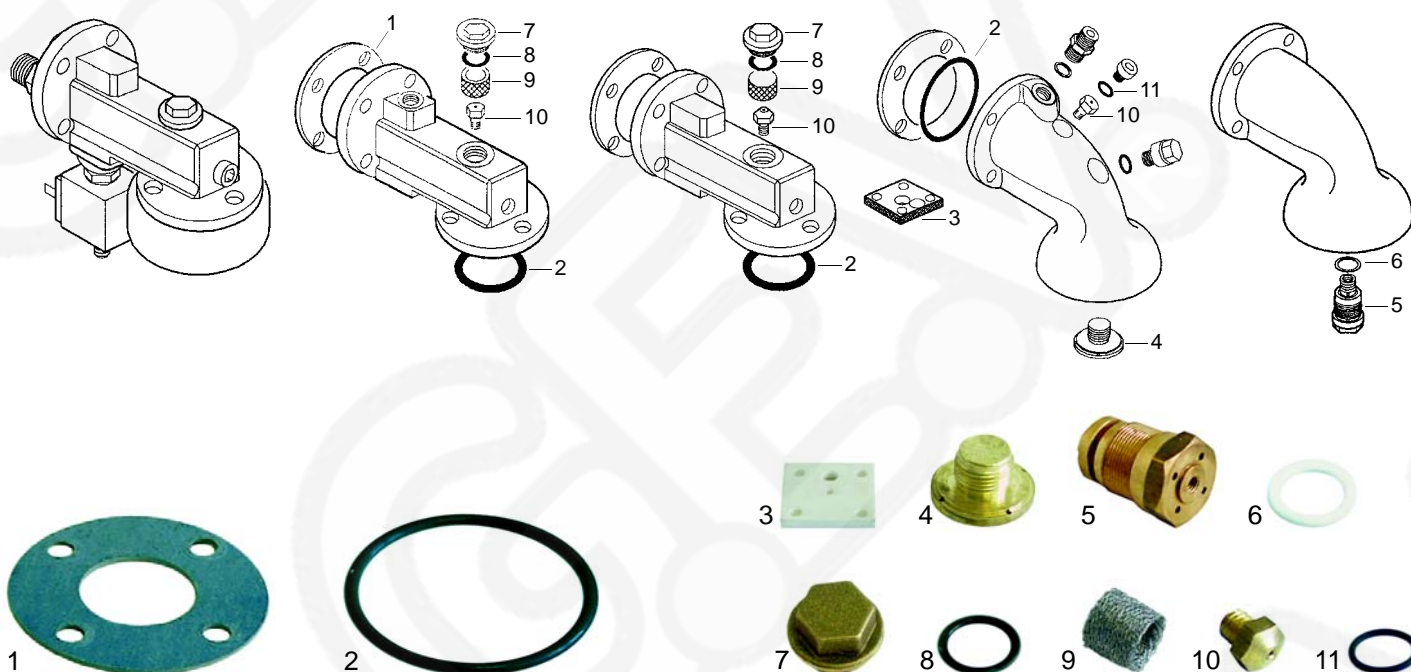


Abb. Pict.	Bestell-Nr. Order-No.	Beschreibung Description	Gerätetyp Device type	Vergl.-Nr. Comp.-No.
1	528152	Dichtung Gasket		12002
2	528178	O-Ring O-ring		12304
3	528186	Iso-Platte Iso-board		12013
4	528174	Verteiler Divider		25422004
5	528180	Düseneinheit Nozzle unit		25739500
6	528179	Dichtung (Teflon) Gasket (teflon)		12012001
7	528316	Schraubkappe Screw cap		25789

Abb. Pict.	Bestell-Nr. Order-No.	Beschreibung Description	Gerätetyp Device type	Ver.-Nr. Com.-No.
8	528251	O-Ring O-ring		12303
9	528317	Filter Filter		10252
10	528175	Düse, 0,6 Nozzle, 0,6		10300A
10	528176	Düse, 0,7 Nozzle, 0,7		10300001
10	528177	Düse, 0,8 Nozzle, 0,8		10300
11	528950	O-Ring O-ring		12330

Siebträgerdichtungen/Filter holder gaskets

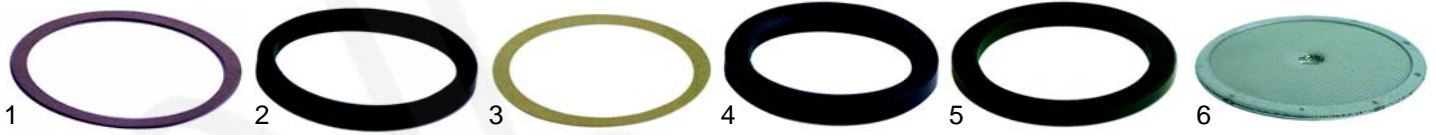


Abb. Pict.	Bestell-Nr. Order-No.	Beschreibung Description	Gerätetyp Device type	Ver.-Nr. Com.-No.
1	528046	Distanzeinlage/alt Shirn gasket/old		
2	528043	Siebträgerdichtung/alt, 66 x 56 x 6mm Holder gasket/old, 66 x 56 x 6mm		
3	528050	Distanzeinlage/neu Shirn gasket/new		

Abb. Pict.	Bestell-Nr. Order-No.	Beschreibung Description	Gerätetyp Device type	Vergl.-Nr. Comp.-No.
4	528042	Siebträgerdichtung, 72 x 56 x 8,5mm Holder gasket, 73 x 56 x 8mm		12217
5	528063	Siebträgerdichtung, 72 x 56 x 8mm Holder gasket, 72 x 56 x 8mm		12215
6	529084	Dusche Shower		27100

Siebe/Filter



Abb. Pict.	Bestell-Nr. Order-No.	Beschreibung Description	Gerätetyp Device type	Vergl.-Nr. Comp.-No.
1	529024	Reinigungsmembran Cleaning membran		
2	529023	Blindfilter Blindfilter		27173
3	529079	Siebträgerfeder Filterholder spring		27254

Abb. Pict.	Bestell-Nr. Order-No.	Beschreibung Description	Gerätetyp Device type	Vergl.-Nr. Comp.-No.
4	529012	Sieb/1 Tasse (6g) Filter/1 cup (6g)		
4	529011	Sieb/1 Tasse (7g) Filter/1 cup (7g)		
5	529014	Sieb/2 Tassen (12g) Filter/2 cups (12g)		
5	529013	Sieb/2 Tassen (14g) Filter/2 cups (14g)		

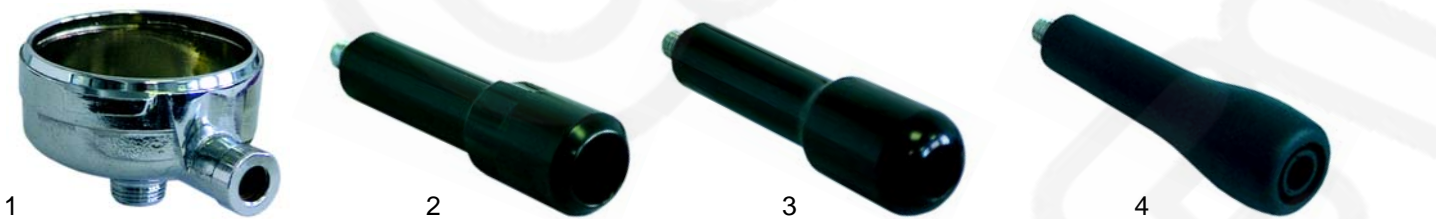


Abb. Pict.	Bestell-Nr. Order-No.	Beschreibung Description	Gerätetyp Device type	Ver.-Nr. Com.-No.
1	529059	Siebträger, M12 Filterholder, M12		27304
2	529044	Siebträgergriff M12 Filterholder handle, M12		15262

Abb. Pict.	Bestell-Nr. Order-No.	Beschreibung Description	Gerätetyp Device type	Ver.-Nr. Com.-No.
3	529045	Siebträgergriff M12 Filterholder handle, M12		
4	111150	Siebträgergriff M12 Filterholder handle, M12		15263010

Siebträgerdichtungen/Filter holder gaskets



Abb. Pict.	Best.-Nr. Ord.-No.	Beschreibung Description	Gerätetyp Device type	V.-Nr. C.-No.
1	529001	Auslauf 3/8", 1 Weg gerade Spout 3/8", one way straight		
2	529004	Auslauf 3/8", 1 Weg gebogen Spout 3/8", one way curved		27030 27032

Abb. Pict.	Best.-Nr. Ord.-No.	Beschreibung Description	Gerätetyp Device type	V.-Nr. C.-No.
3	529003	Auslauf 3/8", 1 Weg gebogen Spout 3/8", one way curved		
4	529007	Auslauf 3/8", 2 Wege kurz Spout 3/8", two way short		27041 27042



Pos. Item	Best.-Nr. Ord.-No.	Beschreibung Description	Gerätetyp Device type	Vergl.-Nr. Comp.-No.
1	802108	Milchaufschäumer/kpl. Milk foamer/cpl.		83300000